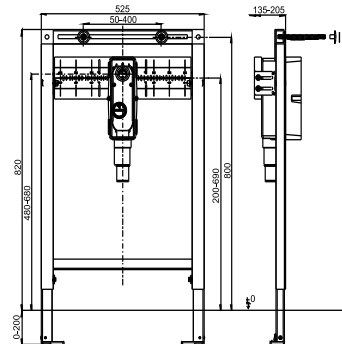
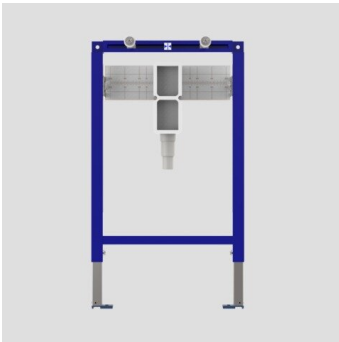


90.685.00..T000

SANIT Wash basin element INEO disabled 820/525



Item number

90.685.00..T000

Product description

Washbasin element INEO for disabled people for single hole mixers
h/w/d: 820/525/98 mm, self-supporting, powder-coated steel frame, for covering with plasterboard, installation onto a solid wall, in drywall constructions etc., 4-point fastening, fully pre-assembled, includes self-locking feet with swivel base plates and fastening set, suits all washbasins, adjustment range of feet from unfinished floor level to upper edge of finished floor level: 0-200 mm, adjustment range front to wall: 135-205 mm (when mounted on wall brackets code no. 17.257.00..T000), with multiply laminated plywood panel and scaling for the free positioning of drinking water pipe wall plates, with SANIT heightadjustable concealed trap code no. 31.608.00..0000 DN 50(d:50)/DN 40(d:40), with 2 M10 bolts for fastening the washbasin including protection plugs and washbasin fastenings, packed in a box

Accessories:

- wall brackets (pair) code no. 17.257.00..T000
- sound-absorbing sets
- finishing set
- standpipe code no. 03.250.00..0000